



# **STRUT SUPPORT SYSTEMS**

Product Catalog





# Strut Support Systems

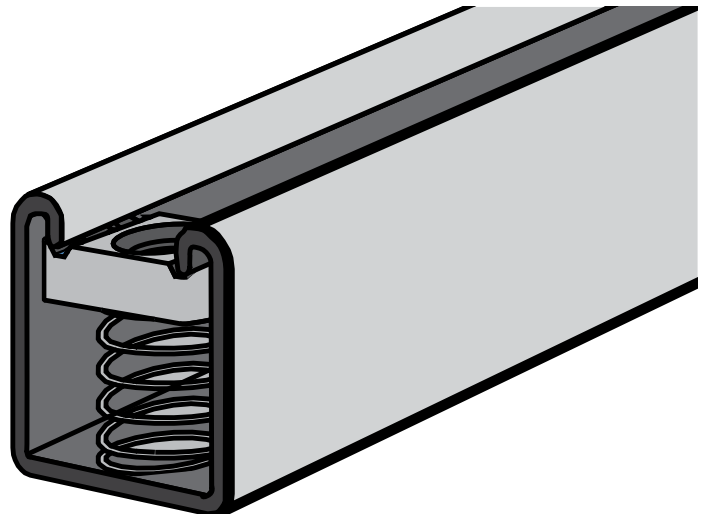
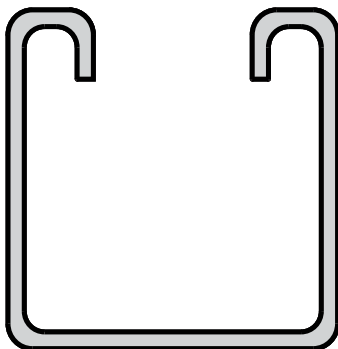
X Strut is committed to becoming a leading provider of quality Metal Framing products worldwide . The X Strut line of continuous slotted steel framing channel and all other X Strut channel and fittings are manufactured to the highest standards. X Strut channel are made with a galvanized finish, making them extremely durable and resistant to chips or damage. Lock nuts are serrated, requiring only normal wrench pressure to secure the nuts into the turned-in channel lips. And a variety of fittings are available, providing a virtually unlimited selection of metal framing and support structures.

## **SPECIFICATION SUGGESTIONS**

Channels are cold roll formed from mild steel with a mill galvanized finish per ASTM A-653. Hot-dip galvanized steel, and stainless steel are also available. Standard lengths are 10' and 20'; custom lengths are available. Channels have a standard width dimension of 1-5/8". Standard lengths are 10 ft. or 20 ft. Lock nuts have serrated grooves for locking to the channel lips. Lock nuts are hot rolled steel, cyanide hardened, and electro-galvanized. Fittings are made of commercial quality hot rolled steel, with an electro-galvanized finish.

## **ADVANTAGES OF X STRUT**

- **HIGH STRENGTH-TO-COST RATIO**
- **COMPLETELY ADJUSTABLE**
- **NO WELDING OR DRILLING REQUIRED**
- **ONE INVENTORY ADAPTABLE TO MANY JOBS**
- **SAW AND WRENCH ARE THE ONLY TOOLS NEEDED**



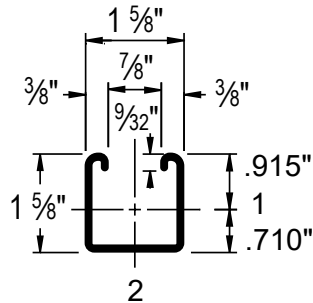
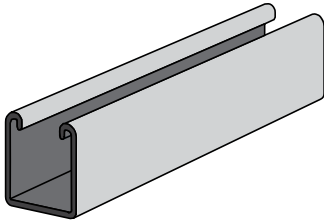
---

## Contents

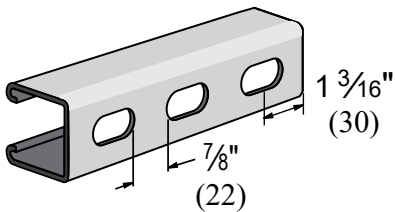
12 Guage Standard Channel	1
12 Guage Deep Channel	2
12 Guage Shallow Channel	3
14 Guage Shallow Channel	4
Channel Nuts	5
Cone Nuts	5
Flat Plate Fittings	6
Angle Fittings	7
U shaped Fittings	8
Adjustable Hinge Fittings	8
Swivel Fittings	8
Post Bases	9
Strut Brackets	10
Roof Blocks	10
Hardware	11
Allthread	12
Rigid Strut Clamp	13
EMT Strut Clamps	14
O.D. Strut Clamps	14
Cushion Clamps	15
End Caps	15
Beam Clamps	16
Engineering Data	18



# 12 Guage Standard Channel

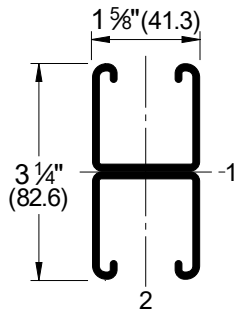
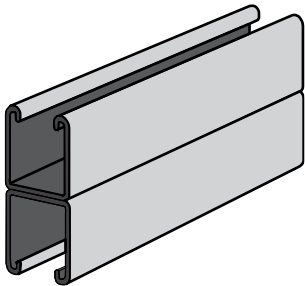


Solid Channel 12 Guage	
Part Number	Description
XS15810	1-5/8" X 10FT SOLID 12GA
XS15820	1-5/8" X 20FT SOLID 12GA
Available Finishes: PG, Stainless	

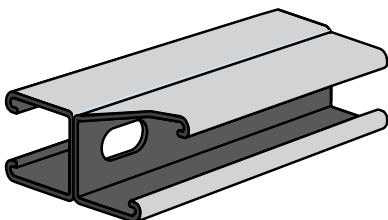


Slots are  
 $1\frac{1}{8}$ " (29) x  $\frac{9}{16}$ " (14)  
 2" (51) on Center

Slotted Channel 12 Guage	
Part Number	Description
XS158HS10	1-5/8" X 10FT HALF-SLOT STRUT
XS158HS20	1-5/8" X 20FT HALF-SLOT STRUT
Available Finishes: PG, Stainless	



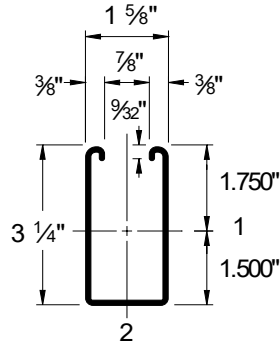
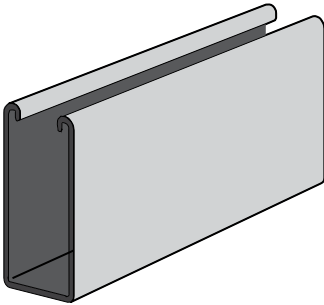
Back/Back Solid Channel 12 Guage	
Part Number	Description
XS158A10	1-5/8" X 10FT BACK TO BACK SOLID 12GA
XS158A20	1-5/8" X 20FT BACK TO BACK SOLID 12GA
Available Finishes: PG, Stainless	



Slots are  
 $1\frac{1}{8}$ " (29) x  $\frac{9}{16}$ " (14)  
 2" (51) on Center

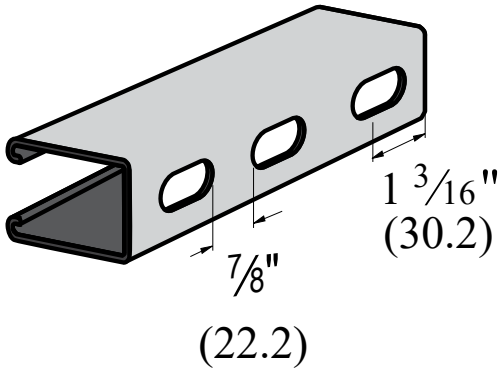
Slotted Back/Back Solid Channel 12 Guage	
Part Number	Description
XS158AHS10	1-5/8" X 10FT HALF-SLOT BACK TO BACK STRUT
XS158AHS20	1-5/8" X 20FT HALF-SLOT BACK TO BACK STRUT

# 12 Guage Deep Channel



Solid Deep Channel 12 Guage	
Part Number	Description
XS31410	3-1/4" X 10FT DEEP SOLID 12GA
XS31420	3-1/4" X 20FT DEEP SOLID 12GA
Available Finishes: PG, Stainless	

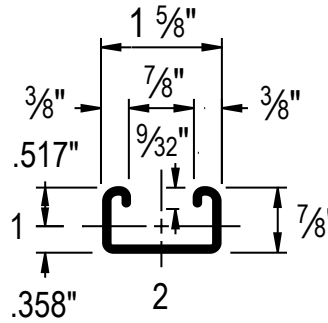
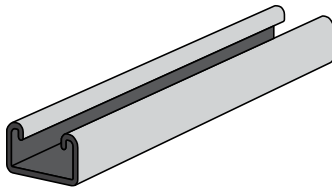
Slots are  
 $1\frac{1}{8}"$  (28.6) x  $\frac{9}{16}"$  (14.3)  
 $2"$  (50.8) on Center



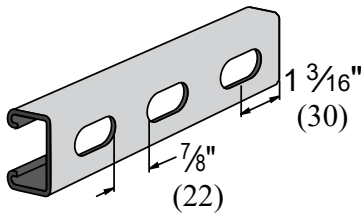
Slotted Deep Channel 12 Guage	
Part Number	Description
XS314HS10	3-1/4" X 10FT DEEP HALF-SLOT STRUT
XS314HS20	3-1/4" X 20FT DEEP HALF-SLOT STRUT
Available Finishes: PG, Stainless	



# 12 Gauge Shallow Channel

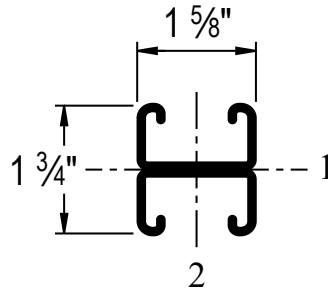
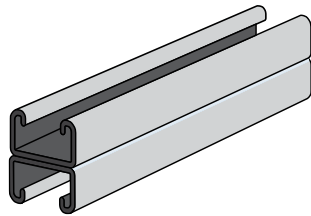


Solid Shallow Channel 12 Gauge	
Part Number	Description
XS7810	7/8" X 10FT SHALLOW SOLID 12GA
XS7820	7/8" X 20FT SHALLOW SOLID 12GA
Available Finishes: PG, Stainless	

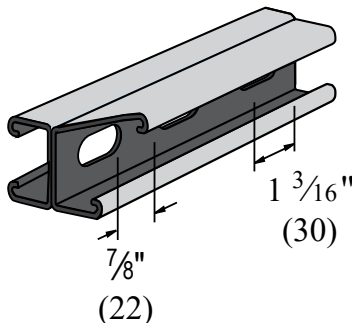


Slots are  
 $1\frac{1}{8}$ " (29) x  $\frac{9}{16}$ " (14)  
 2" (51) on Center

Slotted Shallow Channel 12 Gauge	
Part Number	Description
XS78HS10	7/8" X 10FT SHALLOW HALF-SLOT STRUT
XS78HS20	7/8" X 20FT SHALLOW HALF-SLOT STRUT
Available Finishes: PG, Stainless	



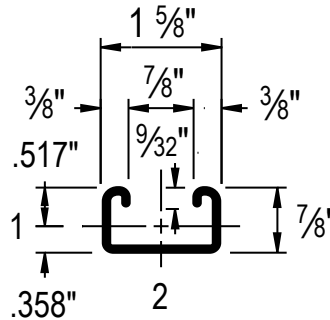
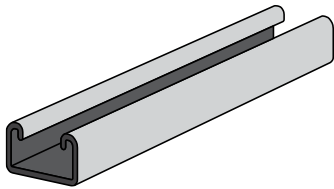
Back/Back Shallow Channel 12 Gauge	
Part Number	Description
XS78A10	7/8" X 10FT BACK TO BACK SOLID 12GA
XS78A20	7/8" X 20FT BACK TO BACK SOLID 12GA



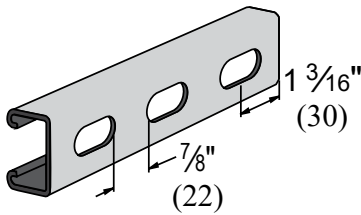
Slots are  
 $1\frac{1}{8}$ " (29) x  $\frac{9}{16}$ " (14)  
 2" (51) on Center

Slotted Back/Back Shallow Channel 12 Gauge	
Part Number	Description
XS78AHS10	7/8" X 10FT SHALLOW BACK TO BACK HALF-SLOT STRUT
XS78AHS20	7/8" X 20FT SHALLOW BACK TO BACK HALF-SLOT STRUT
Available Finishes: PG, Stainless	

# 14 Gauge Shallow Channel

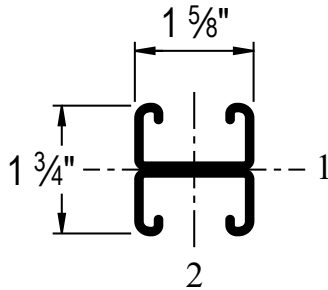
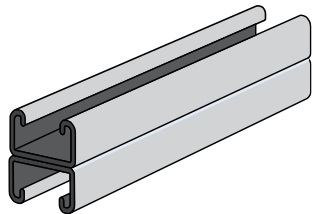


Solid Shallow Channel 14 Gauge	
Part Number	Description
XS7810	7/8" X 10FT SHALLOW SOLID 12GA
XS7820	7/8" X 20FT SHALLOW SOLID 12GA
<b>Available Finishes: PG, Stainless</b>	

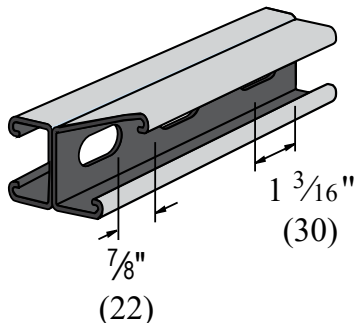


Slots are  
 $1\frac{1}{8}$ " (29) x  $\frac{9}{16}$ " (14)  
 2" (51) on Center

Slotted Shallow Channel 14 Gauge	
Part Number	Description
XS78HS10	7/8" X 10FT SHALLOW HALF-SLOT STRUT
XS78HS20	7/8" X 20FT SHALLOW HALF-SLOT STRUT
<b>Available Finishes: PG, Stainless</b>	



Back/Back Shallow Channel 14 Gauge	
Part Number	Description
XS78A10	7/8" X 10FT BACK TO BACK SOLID 12GA
XS78A20	7/8" X 20FT BACK TO BACK SOLID 12GA



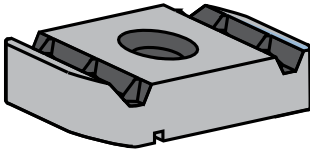
Slots are  
 $1\frac{1}{8}$ " (29) x  $\frac{9}{16}$ " (14)  
 2" (51) on Center

Slotted Back/Back Shallow Channel 14 Gauge	
Part Number	Description
XS78AHS10	7/8" X 10FT SHALLOW BACK TO BACK HALF-SLOT STRUT
XS78AHS20	7/8" X 20FT SHALLOW BACK TO BACK HALF-SLOT STRUT
<b>Available Finishes: PG, Stainless</b>	



# Channel Nuts

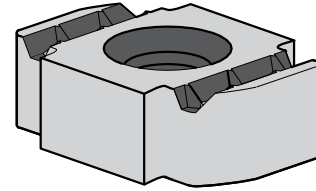
Available Finishes:  
EG, HDG,  
304 & 316 Stainless



## CNCN200, CNCN300

Channel Nut Without Spring

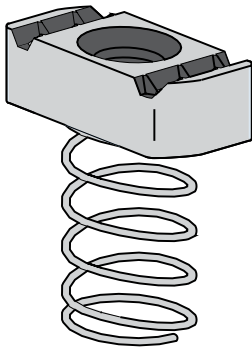
Part Number	Size	Use With
CNCN20025	1/4	Any Channel
CNCN30037	3/8	
CNCN30050	1/2	Shallow Only
<b>Available Finishes: EG, HG, Stainless</b>		



## CNCN400

Channel Nut Without Spring

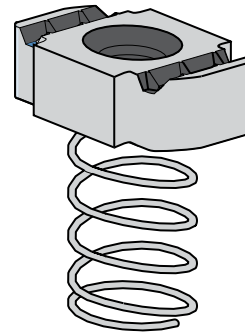
Part Number	Size	Use With
CNCN40050	1/2	Any Channel Except Shallow
CNCN40062	5/8	
CNCN40075	3/4	
<b>Available Finishes: EG, HG, Stainless</b>		



## CNS200, CNS300, CNS400

Channel Nut With Spring

Part Number	Size	Use With
CNS20025	1/4	Any Channel Except Shallow
CNS30037	3/8	
CNS40050	1/2	
<b>Available Finishes: EG, HG, Stainless</b>		

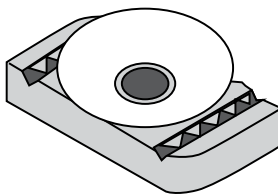


## CNS40050, CNS40062, CNS40075

Channel Nut With Spring

Part Number	Size	Use With
CNS40050	1/2	Any Channel Except Shallow
CNS40062	5/8	
CNS40062	3/4	
<b>Available Finishes: EG, HG, Stainless</b>		

# Cone Nuts



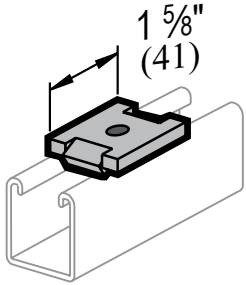
## CNC

Cone Nut

Part Number	Size	Use With
CNC30025	1/4	Any Channel
CNC30037	3/8	
CNC30050	1/2	
<b>Available Finishes: EG</b>		

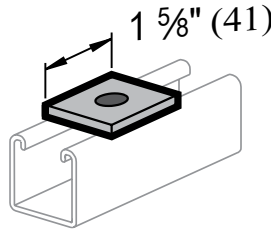
# Flat Plate Fittings

Available Finishes:  
EG, HDG,  
304 & 316 Stainless



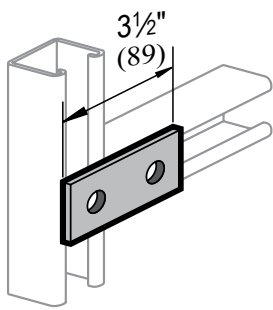
## F SERIES NO TWIST SQUARE WASHER

Part Number	Bolt Size	Hole Size
F10 0025	1/4"	5/16"
F12 0050	1/2"	9/16"

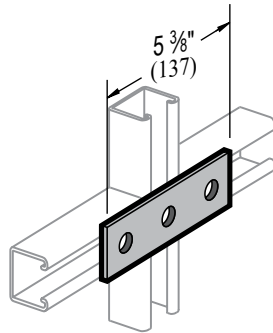


## F SERIES SQUARE WASHER

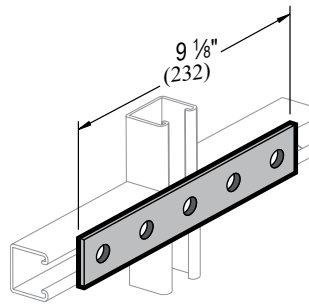
Part Number	Bolt Size	Hole Size
F13 0025	1/4"	5/16"
F14 0037	3/8"	7/16"
F15 0050	1/2"	9/16"
F16 0062	5/8"	11/16"
F17 0075	3/4"	13/16"
F18 0087	7/8"	15/16"



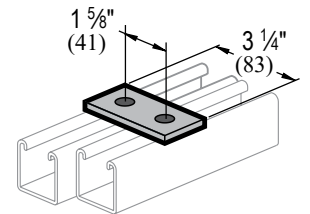
2 HOLE  
SPLICE PLATE  
**F09**



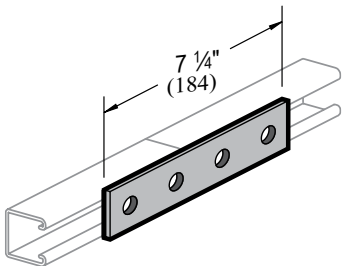
3 HOLE  
SPLICE PLATE  
**F20**



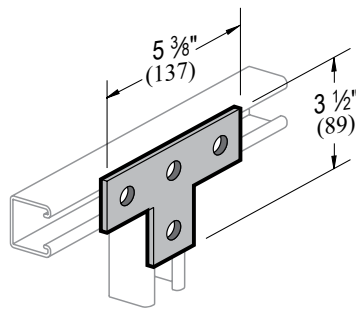
5 HOLE  
SPLICE PLATE  
**F21**



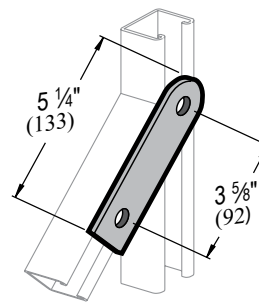
2 HOLE  
SPLICE PLATE  
**F22**



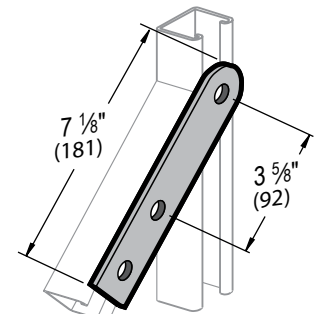
4 HOLE  
SPLICE PLATE  
**F23**



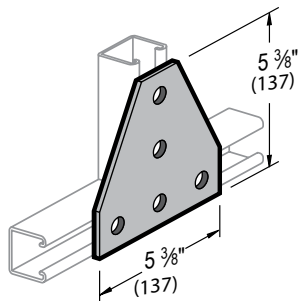
4 HOLE  
TEE PLATE  
**F25**



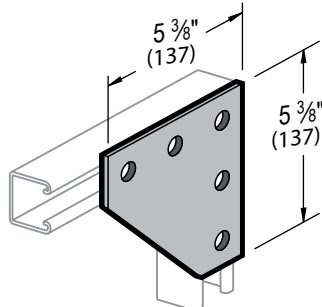
2 HOLE  
SWIVEL PLATE  
**F26**



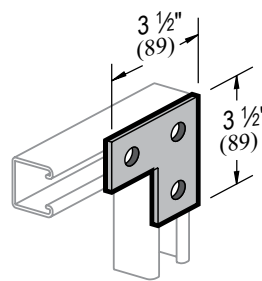
3 HOLE  
SWIVEL PLATE  
**F27**



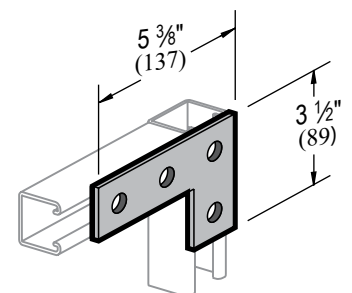
5 HOLE  
GUSSET PLATE  
**F32**



4 HOLE  
TEE PLATE  
**F34**



2 HOLE  
SWIVEL PLATE  
**F36**

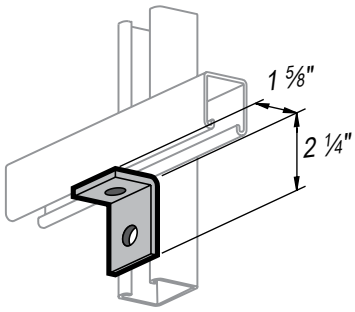


3 HOLE  
SWIVEL PLATE  
**F37**



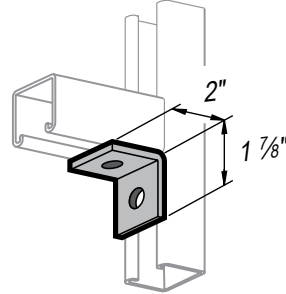
# Angle Fittings

Available Finishes:  
EG, HDG,  
304 & 316 Stainless



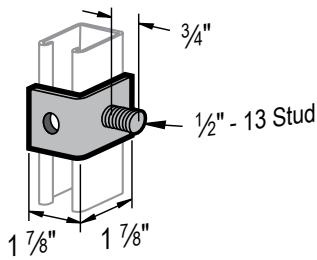
Part Number	Bolt Size	Hole Size
L10 0000	1/2"	9/16"
L10 0037	3/8"	7/16"

2-HOLE 1-5/8" X 2-1/4"  
90° CORNER  
**L10**

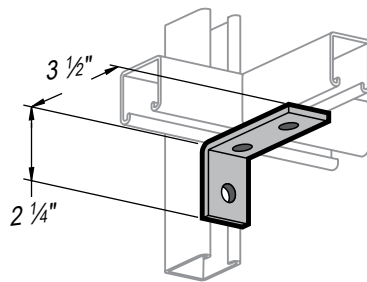


Part Number	Bolt Size	Hole Size
L11 0000	1/2"	9/16"
L11 0037	3/8"	7/16"

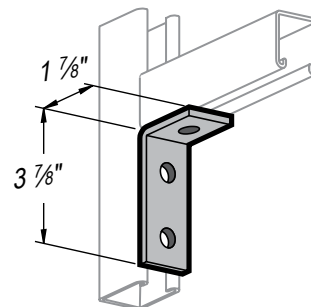
2-HOLE 2" X 1-7/8"  
90° CORNER  
**L11**



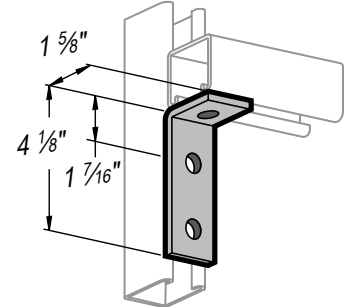
1 HOLE ANGLE  
W/STUD  
**L14**



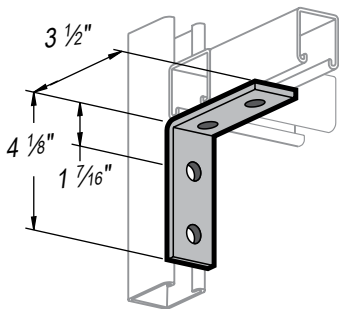
3 HOLE 3-1/2" X 2-1/4"  
CORNER ANGLE  
**L18**



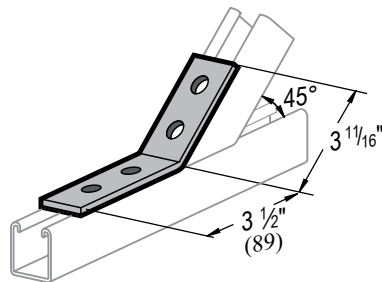
3 HOLE 1-7/8" X 3-7/8"  
CORNER ANGLE  
**L19**



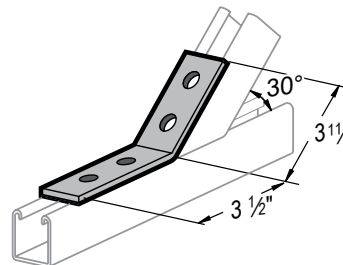
3 HOLE 1-5/8" X 4-1/8"  
CORNER ANGLE  
**L20**



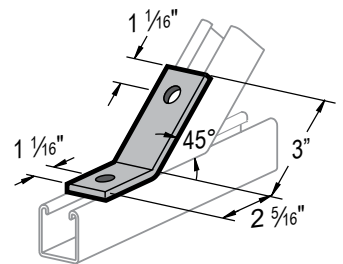
4-HOLE 90°  
CORNER ANGLE  
**L220000**



4-HOLE 45°  
CORNER ANGLE  
**L220045**

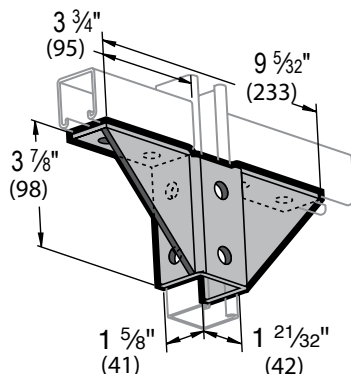


4-HOLE 30°  
CORNER ANGLE  
**L45**

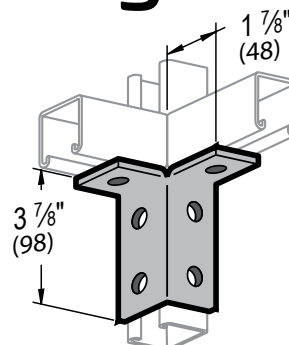


2-HOLE 45°  
CORNER ANGLE  
**L46**

# Wing Fittings

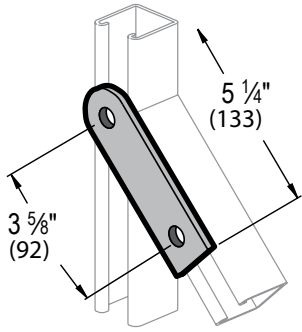


10-HOLE  
WING GUSSET  
**W24**



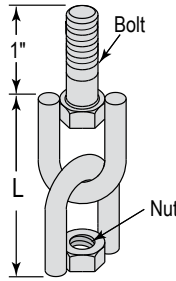
6-HOLE  
WING FITTING  
**W13**

# Swivel Fitting



2-HOLE  
SWIVEL FITTING  
**F26**

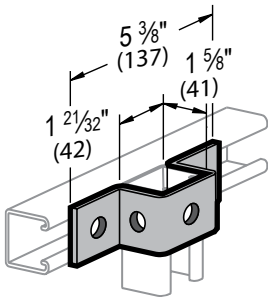
Available Finishes:  
EG, HG, Stainless



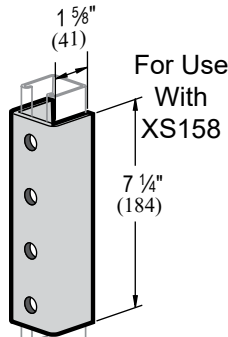
FEMALE-MALE  
SWIVEL  
**SWMF**

Part Number	Bolt Size	Nut Size	L
SWMF0050	1/2"	1/2"	2-3/4"
SWMF0037	3/8"	3/8"	3"
Available Finishes: EG			

# U shaped Fittings

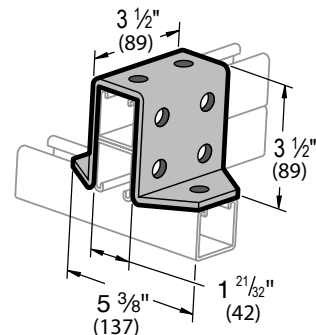


5 HOLE  
U SUPPORT  
**U10**



4 HOLE  
SPLICE CLEVIS  
**U24**

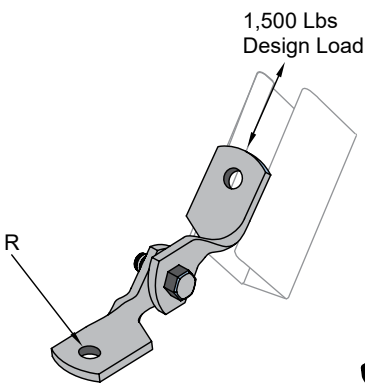
For Use  
With  
XS158



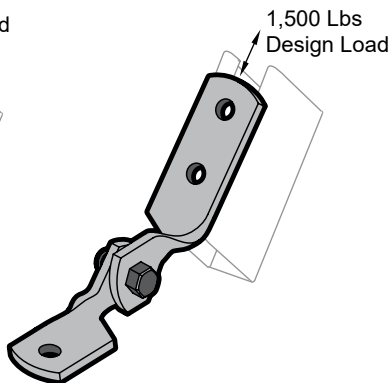
12-HOLE  
U FITTING FOR B/B  
**U32**

For Use  
With  
XS158A

# Adjustable Hinge Fittings

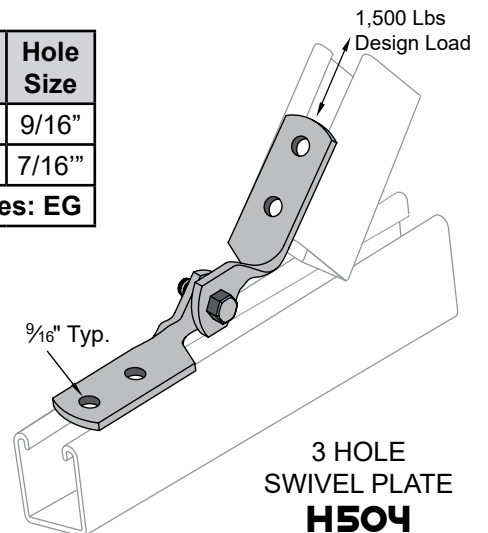


4 HOLE  
SPLICE PLATE  
**H502**



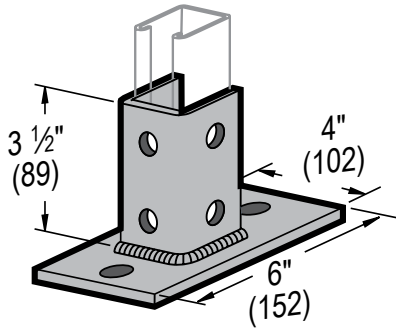
4 HOLE  
TEE PLATE  
**H503**

Part Number	Bolt Size	Hole Size
H503-050	1/2"	9/16"
H503-037	3/8"	7/16"
Available Finishes: EG		

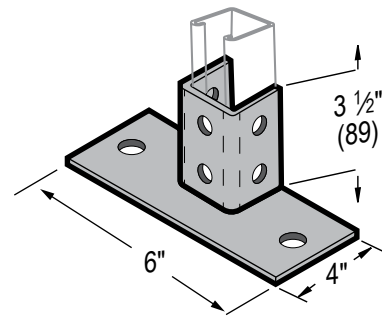
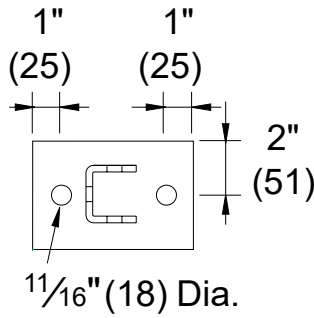


3 HOLE  
SWIVEL PLATE  
**H504**

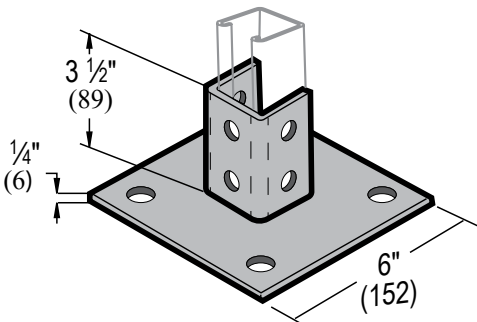
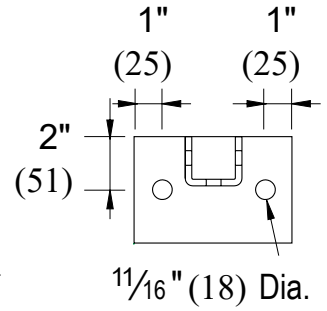
## Post Bases



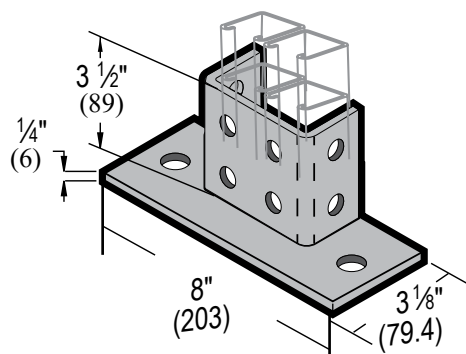
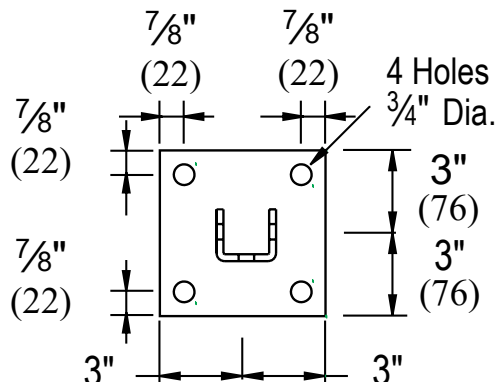
POST BASE  
(2-H BASE PLATE) FOR 1-5/8"  
**SPO9**



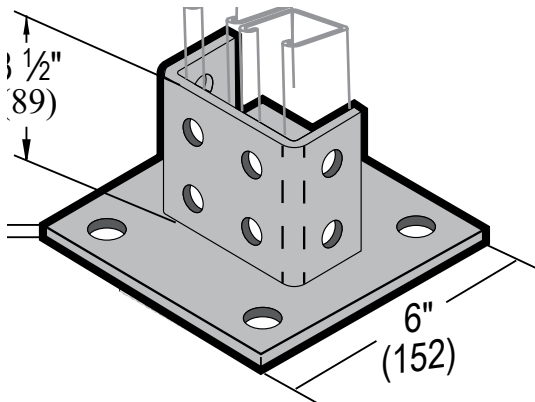
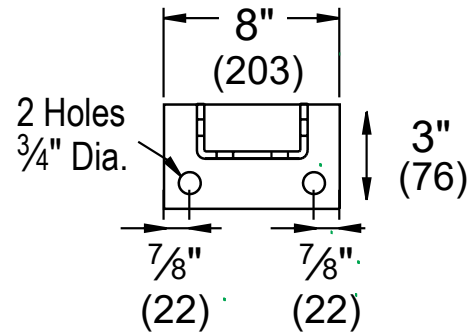
POST BASE FLUSH  
(2-H BASE PLATE) FOR 1-5/8"  
**SPO9FL**



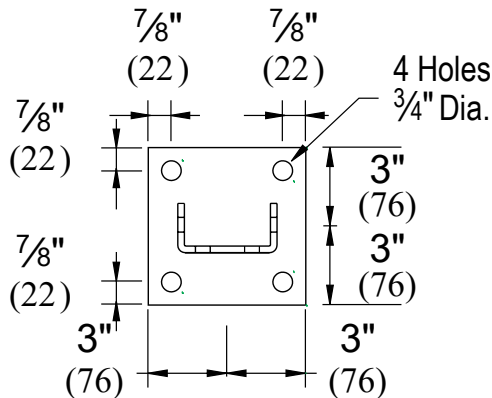
POST BASE SQUARE  
(2-H BASE PLATE) FOR 1-5/8"  
**SP11SQ**



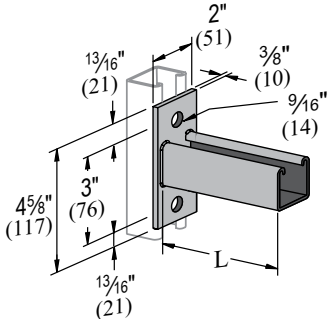
POST BASE FLUSH FOR A12A  
**SP13FL**



POST BASE SQUARE FOR A12A  
**SP13SQ**



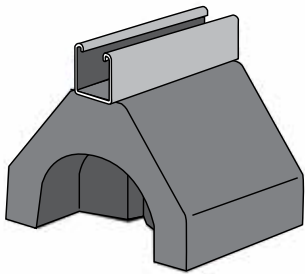
# Strut Brackets



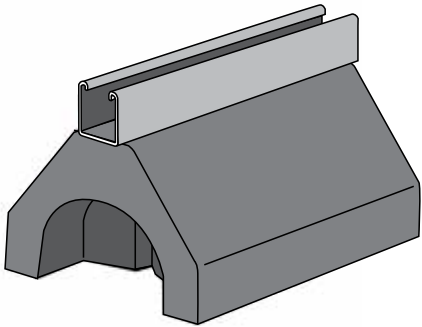
Part Number	Size (L)
BR221200	12"
BR221800	18"
BR222400	24"

SGL STRUT BRACKET  
**BR22**

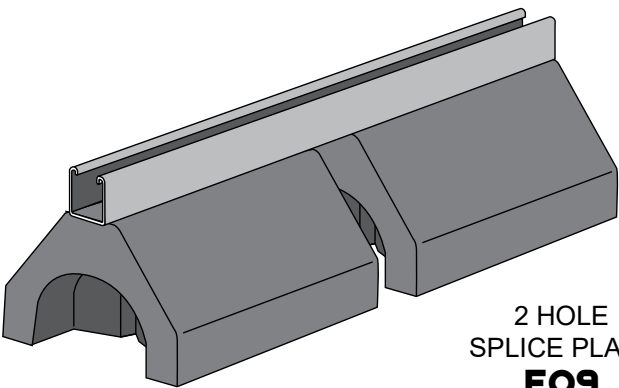
# Roof Blocks



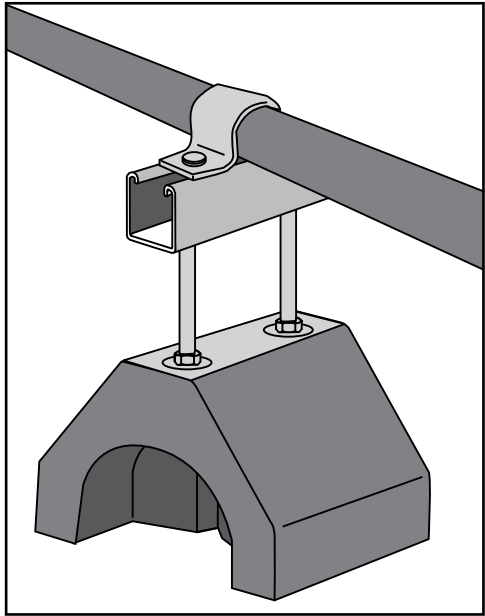
2 HOLE  
SPLICE PLATE  
**FO9**



2 HOLE  
SPLICE PLATE  
**FO9**



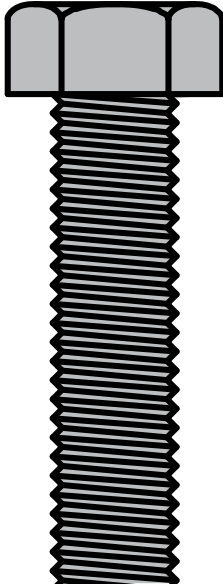
2 HOLE  
SPLICE PLATE  
**FO9**



Roof Block supports offer a total solution for rooftop applications such as solar PV mounting systems, piping, HVAC equipment, roof top walkway, ducts, conduit and cable tray supports.

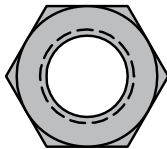
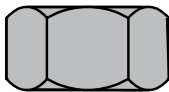
Made of 100% recycled rubber, the Dura-Blok support has no sharp or abrasive edges and does not penetrate the roof, helping extend the life of the roof. Supports are suitable for any type roofing material or other flat surfaces.

# Hardware



Hex Bolt  
**HXB**

Part Number	Size
HXB375075	3/8" x 3/4"
HXB375100	3/8" x 1"
HXB375125	3/8" x 1 1/4"
HXB375150	3/8" x 1 1/2"
HXB375200	3/8" x 2"
HXB375225	3/8" x 2 1/4"
HXB375250	3/8" x 2 1/2"
HXB375275	3/8" x 2 3/4"
HXB050100	1/2" x 1"
HXB050150	1/2" x 1 1/2"
HXB050175	1/2" x 1 3/4"
HXB050200	1/2" x 2"
HXB050225	1/2" x 2 1/4"
HXB050250	1/2" x 2 1/2"
<b>Available Finishes: EG, HG, Stainless</b>	

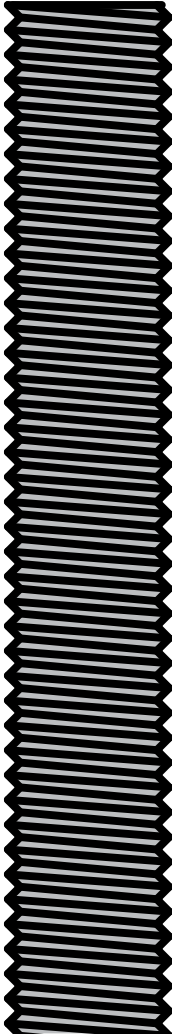


Hex Nut  
**HXN**

Part Number	Size
HXN375	3/8"
HXN050	1/2"
HXN075	3/4"
<b>Available Finishes: EG, HG, Stainless</b>	

---

# 3/4" Allthread

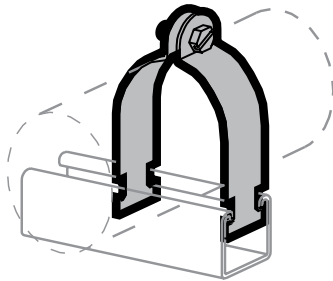
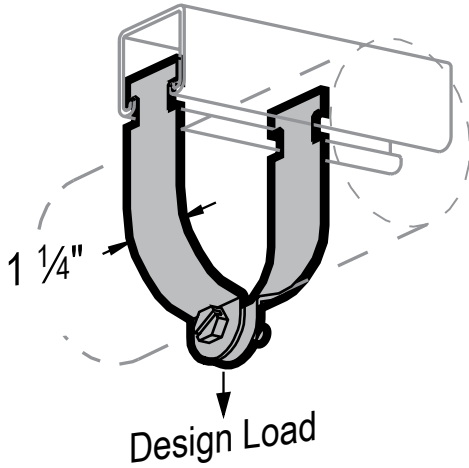


Part Number	Length
ATR075 05	5'
ATR075 10	10'
ATR075 12	12'
ATR075 20	20'
<b>Available Finishes: EG, HG, Stainless</b>	

Allthread  
**ATR**

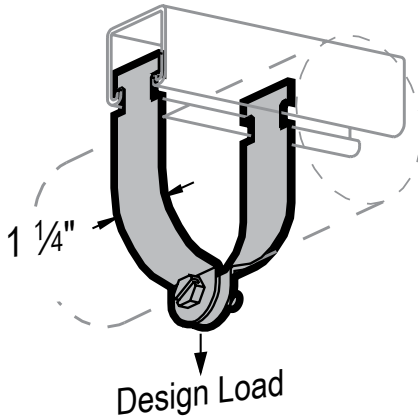


# Rigid Strut Clamp



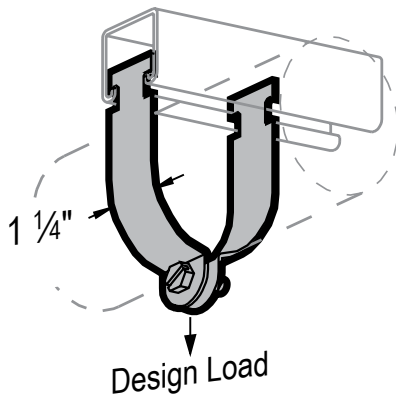
Part Number	Conduit Size	Finish
SRIG 0050EG	1/2"	EG
SRIG 0075EG	3/4"	EG
SRIG 0100EG	1"	EG
SRIG 0125EG	1-1/4"	EG
SRIG 0150EG	1-1/2"	EG
SRIG 0200EG	2"	EG
SRIG 0250EG	2-1/2"	EG
SRIG 0300EG	3"	EG
SRIG 0350EG	3-1/2"	EG
SRIG 0400EG	4"	EG
SRIG 0600EG	6"	EG
SRIG 0050HG	1/2"	HDG
SRIG 0075HG	3/4"	HDG
SRIG 0100HG	1"	HDG
SRIG 0125HG	1-1/4"	HDG
SRIG 0150HG	1-1/2"	HDG
SRIG 0200HG	2"	HDG
SRIG 0300HG	3"	HDG
SRIG 0350HG	3-1/2"	HDG
SRIG 0400HG	4"	HDG
SRIG 0075S4	3/4"	304 SS
SRIG 0100S4	1"	304 SS
SRIG 0150S4	1-1/2"	304 SS
SRIG 0200S4	2"	304 SS
SRIG 0400S4	4"	304 SS
SRIG 0050S6	1/2"	316 SS
SRIG 0075S6	3/4"	316 SS
SRIG 0100S6	1"	316 SS
SRIG 0125S6	1-1/4"	316 SS
SRIG 0150S6	1-1/2"	316 SS
SRIG 0200S6	2"	316 SS
SRIG 0300S6	3"	316 SS
SRIG 0400S6	4"	316 SS

# EMT Strut Clamps



Part Number	Conduit Size	Finish
SEMTC037	3/8"	EG
SEMTC050	1/2"	EG
SEMTC075	3/4"	EG
SEMTC100	1"	EG
SEMTC125	1-1/4"	EG
SEMTC150	1-1/2"	EG
SEMTC200	2"	EG
SEMT2125	1-1/4"	HDG
SEMT2150	1-1/2"	HDG

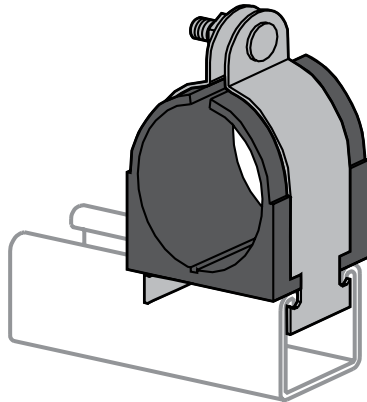
# O.D. Strut Clamps



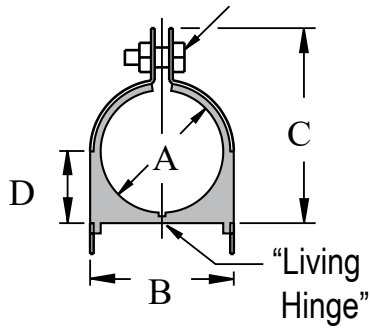
Part Number	O.D. Size	Finish
SOD00050	1/2"	EG
SOD00262	2-5/8"	EG
SOD00275	2-3/4"	EG
SOD00300	3"	EG
SOD00362	3-5/8"	EG
SOD00875	8-3/4"	EG



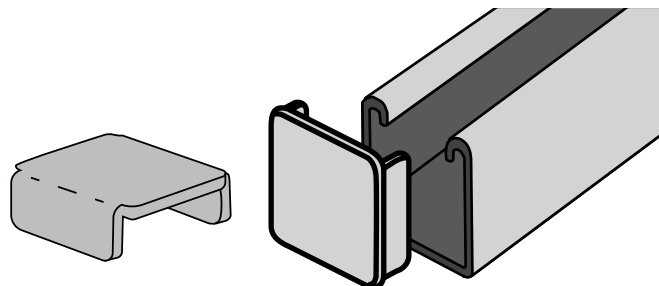
# Cushion Clamps



Part Number	Copper & Steel Tube O.D. Size	A	B	C	D
SCUSH025	1/4"	.25	.62	.98	.27
SCUSH037	3/8"	.37	.82	1.13	.33
SCUSH050	1/2"	.50	.94	1.34	.40
SCUSH062	5/8"	.62	1.06	1.54	.46
SCUSH087	7/8"	.87	1.31	1.82	.58
SCUSH112	1-1/8"	1.12	1.57	2.08	.70
SCUSH137	1-3/8"	1.37	1.82	2.34	.83
SCUSH187	1-7/8"				
SCUSH237	2-3/8"				
SCUSH350	3-1/2"				

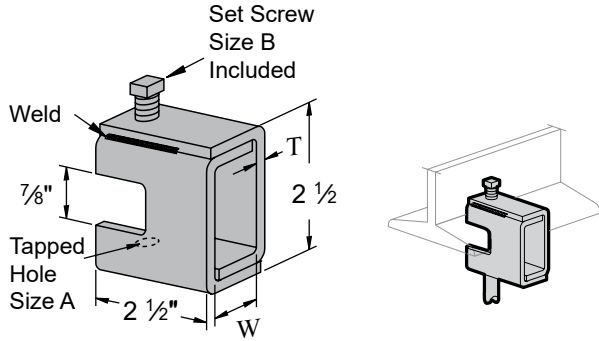


# End Caps



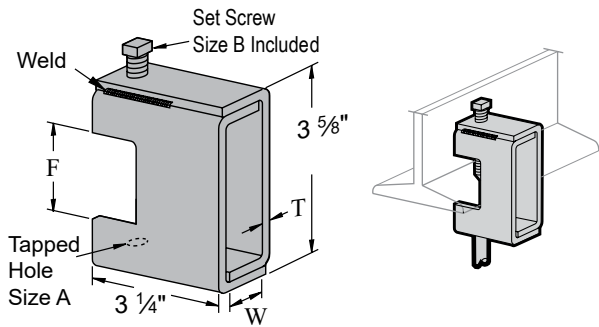
END CAP  
**EC12**

# Beam Clamps

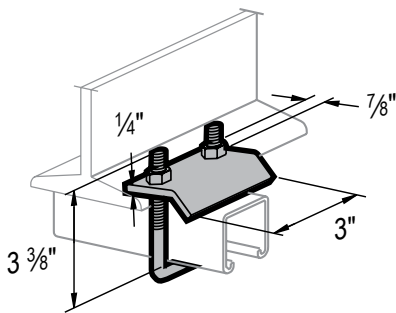


Part Number	A	B	T	W	Flange Size
BC130037	5/16"-18	3/8" x 1-1/2"	1/8"	7/8"	7/8"
BC130050	3/8"-16	1/2" x 1-1/2"	3/16"	15/16"	7/8"

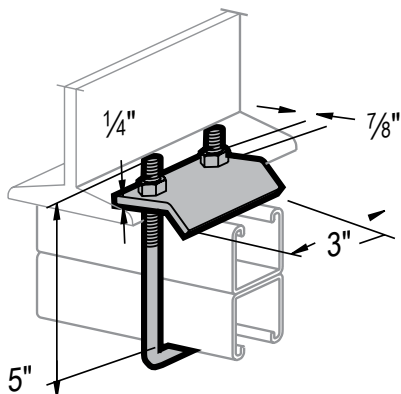
For beams under 7/8" thick flange



Part Number	A	B	T	W	Flange Size (F)
BC140025	1/4"-20	3/8" x 2"	1/8"	7/8"	1-21/32"
BC140050	1/2"-13	1/2" x 2"	1/4"	15/16"	1-11/16"



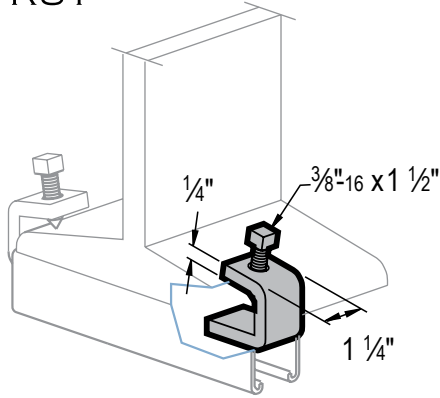
Part Number	For Use With Channel Sizes	Flange Size
BC17A000	7/8" up to 1-5/8"	Up to 3/4"



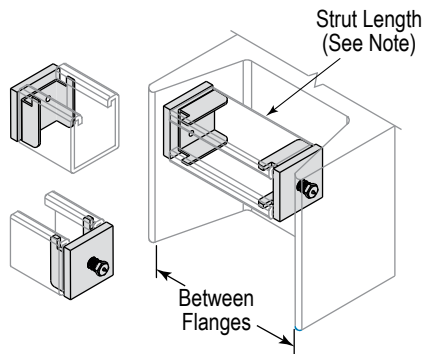
Part Number	For Use With Channel Sizes	Flange Size
BC17E000	2-7/16" up to 3-1/4"	Up to 3/4"



# Beam Clamps

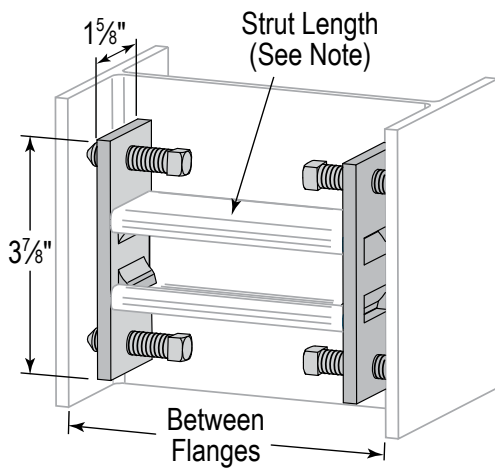


Part Number	Screw Size	Flange Size
BC180000	3/8-16"	7/8"



Part Number	For Use With Channel Sizes
BC23A000	1-5/8" 12G

Includes 1 adjustable cap and 1 nonadjustable cap, for use with 12 gauge strut. Cut strut length 1-1/4" to 1-5/8" shorter than the average distance between flanges. Design load 500 Lbs [2.22 kN] when used as a set



Part Number	For Use With Channel Sizes
BC23B000	1-5/8" 12G, 14G

Includes 2 adjustable caps. For use with 12 gauge and 14 gauge strut. Cut strut length 1-1/4" to 1-5/8" shorter than the average distance between flanges. Design load 1000 Lbs [2.22 kN] when used as a set

# Steel Channel Engineering Data

## PROPERTIES OF SECTIONS:

I = Moment of Inertia

S = Section Modulus

r = Radius of Gyration

Wt. = Weight

Area = Cross Sectional Area

\* Limited by spot weld shear.

## STANDARD LENGTHS:

10 ft (3.05 m) & 20 ft (6.09 m)

## STANDARD FINISH:

Mill-galvanized per ASTM A-653.

## BEAM AND COLUMN DATA:

**Uniform Load:** Load shown is total load uniformly distributed over a simple span. Stress level is 25,000 psi (172MPa) and is recommended for use where deflection is not critical.

**Uniform Load at Deflection = 1/240 Span:** Load shown is total load uniformly distributed over a simple span. This load is recommended for use where deflection is required to be unnoticeable.

**Maximum Column Loading:** Load shown is total allowable axial load. For eccentric loads, reduce values shown accordingly.

For allowable concentrated load at center of span, multiply load shown by 0.5 and deflection shown by 0.8.

XS158 CHANNEL							
BEAM SPAN OR COLUMN HT		UNIFORM LOAD		UNIFORM LOAD AT DEFLECTION = 1/24 SPAN		MAXIMUM COLUMN LOAD	
in	mm	lbs	kN	lbs	kN	lbs	kN
24	610	1700	7.62	1700	7.62	8370	37.50
36	914	1133	5.08	1133	5.08	7020	31.45
48	1219	850	3.81	772	3.46	5573	24.97
60	1524	680	3.05	494	2.21	4246	19.02
72	1829	566	2.54	343	1.54	3411	15.28
81	2134	485	2.17	252	1.13	2858	12.80
96	2438	425	1.90	193	0.86	2455	11.00
108	2743	377	1.69	152	0.68	2142	9.60
120	3048	340	1.52	123	0.55	1890	8.47

Wt. = 1.90 lbs/ft (2.83 kg/m)

Area = 0.558 in<sup>2</sup> (3.60 cm<sup>2</sup>)

I<sub>x-x</sub> = 0.185 in<sup>4</sup> (7.70 cm<sup>4</sup>)

S<sub>x-x</sub> = 0.204 in<sup>3</sup> (3.34 cm<sup>3</sup>)

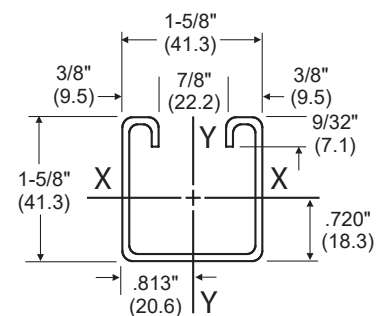
r<sub>x-x</sub> = 0.576 in (14.63 cm)

I<sub>y-y</sub> = 0.234 in<sup>4</sup> (9.74 cm<sup>4</sup>)

S<sub>y-y</sub> = 0.288 in<sup>3</sup> (4.72 cm<sup>3</sup>)

r<sub>y-y</sub> = 0.647 in (16.43 cm)

Thickness = 12 GA (2.6 mm)



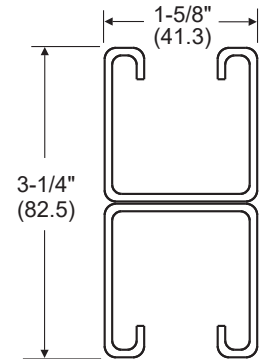


# Steel Channel Engineering Data

## XS158A CHANNEL

BEAM SPAN OR COLUMN HT		UNIFORM LOAD		UNIFORM LOAD AT DEFLECTION = 1/24 SPAN		MAXIMUM COLUMN LOAD	
in	mm	lbs	kN	lbs	kN	lbs	kN
24	610	2480*	11.11	2480*	11.11	19047	85.33
36	914	2480*	11.11	2480*	11.11	18357	82.24
48	1219	2408	10.79	2408	10.79	17389	77.90
60	1524	1926	8.63	1926	8.63	16146	72.33
72	1829	1605	7.19	1605	7.19	14625	65.52
81	2134	1376	6.16	1278	5.72	12829	57.47
96	2438	1204	5.39	979	4.39	10755	48.18
108	2743	1070	4.79	773	3.46	8571	38.40
120	3048	963	4.31	626	2.80	6943	31.10

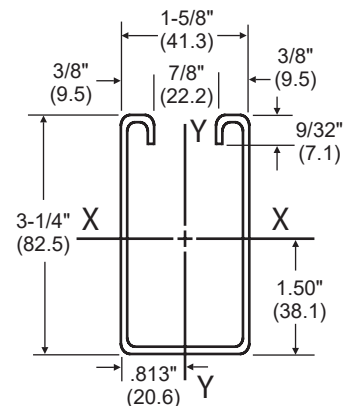
Wt. = 3.80 lbs/ft (5.65 kg/m)  
 Area = 1.116 in<sup>2</sup> (7.20cm<sup>2</sup>)  
 $I_{x-x} = 0.940 \text{ in}^4 (39.12 \text{ cm}^4)$   
 $S_{x-x} = 0.578 \text{ in}^3 (9.47 \text{ cm}^3)$   
 $r_{x-x} = 0.918 \text{ in} (23.32 \text{ cm})$   
 $I_{y-y} = 0.468 \text{ in}^4 (19.48 \text{ cm}^4)$   
 $S_{y-y} = 0.576 \text{ in}^3 (9.44 \text{ cm}^3)$   
 $r_{y-y} = 0.647 \text{ in} (16.43 \text{ cm})$   
 Thickness = 12 GA (2.6 mm)



## XS314 CHANNEL

BEAM SPAN OR COLUMN HT		UNIFORM LOAD		UNIFORM LOAD AT DEFLECTION = 1/24 SPAN		MAXIMUM COLUMN LOAD	
in	mm	lbs	kN	lbs	kN	lbs	kN
24	610	5241	23.48	5241	23.48	7371	33.02
36	914	3494	15.65	3494	15.65	6579	29.47
48	1219	2620	11.74	2620	11.74	5592	25.05
60	1524	2096	9.39	2096	9.39	4489	20.11
72	1829	1747	7.83	1747	7.83	3484	15.61
81	2134	1497	6.71	1496	6.70	2756	12.35
96	2438	1310	5.87	1145	5.13	2307	10.33
108	2743	1164	5.21	905	4.05	1991	8.92
120	3048	1048	4.69	733	3.28	1757	7.87

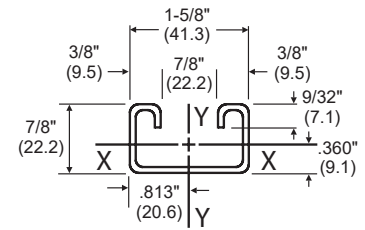
Wt. = 3.05 lbs/ft (4.54 kg/m)  
 Area = 0.897 in<sup>2</sup> (5.79cm<sup>2</sup>)  
 $I_{x-x} = 1.100 \text{ in}^4 (45.78 \text{ cm}^4)$   
 $S_{x-x} = 0.629 \text{ in}^3 (10.31 \text{ cm}^3)$   
 $r_{x-x} = 1.107 \text{ in} (28.12 \text{ cm})$   
 $I_{y-y} = 0.437 \text{ in}^4 (18.19 \text{ cm}^4)$   
 $S_{y-y} = 0.538 \text{ in}^3 (8.82 \text{ cm}^3)$   
 $r_{y-y} = 0.698 \text{ in} (17.73 \text{ cm})$   
 Thickness = 12 GA (2.6 mm)



# Steel Channel Engineering Data

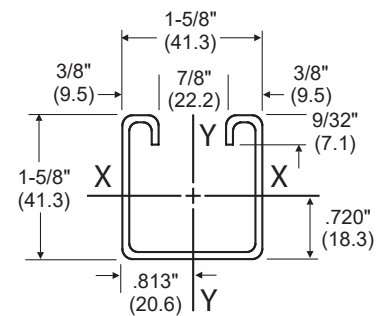
XS78 CHANNEL							
BEAM SPAN OR COLUMN HT		UNIFORM LOAD		UNIFORM LOAD AT DEFLECTION = 1/24 SPAN		MAXIMUM COLUMN LOAD	
in	mm	lbs	kN	lbs	kN	lbs	kN
24	610	650	2.91	642	2.88	7858	35.20
36	914	433	1.94	296	1.33	6198	27.77
48	1219	325	1.46	166	0.74	4101	18.37
60	1524	260	1.16	106	0.47	2648	11.86
72	1829	246	0.97	74	0.33	1838	8.23
81	2134	185	0.83	54	0.24	-	-
96	2438	162	0.73	41	0.18	-	-
108	2743	144	0.64	32	0.14	-	-
120	3048	130	0.58	26	0.12	-	-

Wt. = 1.36 lbs/ft (2.02 kg/m)  
 Area = 0.400 in<sup>2</sup> (2.58 cm<sup>2</sup>)  
 $I_{x-x} = 0.040$  in<sup>4</sup> (1.66 cm<sup>4</sup>)  
 $S_{x-x} = 0.078$  in<sup>3</sup> (1.28 cm<sup>3</sup>)  
 $r_{x-x} = 0.316$  in (8.03 cm)  
 $I_{y-y} = 0.148$  in<sup>4</sup> (6.16 cm<sup>4</sup>)  
 $S_{y-y} = 0.182$  in<sup>3</sup> (2.98 cm<sup>3</sup>)  
 $r_{y-y} = 0.647$  in (16.43 cm)  
 Thickness = 12 GA (2.6 mm)



XS78A CHANNEL							
BEAM SPAN OR COLUMN HT		UNIFORM LOAD		UNIFORM LOAD AT DEFLECTION = 1/24 SPAN		MAXIMUM COLUMN LOAD	
in	mm	lbs	kN	lbs	kN	lbs	kN
24	610	1350	6.05	1350	6.05	17490	78.35
36	914	1144	5.12	1144	5.12	15695	70.31
48	1219	858	3.84	750	3.36	13558	60.74
60	1524	686	3.07	480	2.15	11097	49.71
72	1829	572	2.56	333	1.49	8290	37.14
81	2134	490	2.19	244	1.09	6096	27.31
96	2438	429	1.92	187	0.84	4668	20.91
108	2743	381	1.71	148	0.66	-	-
120	3048	343	1.54	120	0.54	-	-

Wt. = 2.72 lbs/ft (4.05 kg/m)  
 Area = 0.800 in<sup>2</sup> (5.16 cm<sup>2</sup>)  
 $I_{x-x} = 0.180$  in<sup>4</sup> (7.49 cm<sup>4</sup>)  
 $S_{x-x} = 0.206$  in<sup>3</sup> (3.38 cm<sup>3</sup>)  
 $r_{x-x} = 0.474$  in (12.04 cm)  
 $I_{y-y} = 0.296$  in<sup>4</sup> (12.32 cm<sup>4</sup>)  
 $S_{y-y} = 0.364$  in<sup>3</sup> (5.97 cm<sup>3</sup>)  
 $r_{y-y} = 0.608$  in (15.44 cm)  
 Thickness = 12 GA (2.6 mm)





# **STRUT SUPPORT SYSTEMS**

Product Catalog